

FOR SUBLEASE

505 Park Avenue

Northeast Corner of 59th Street

PROPERTY HIGHLIGHTS

Entire 16th Floor: 9,404 RSF

Possession: Immediate

Term: Through October 30, 2026

Rate: Upon Request

(very competitive)

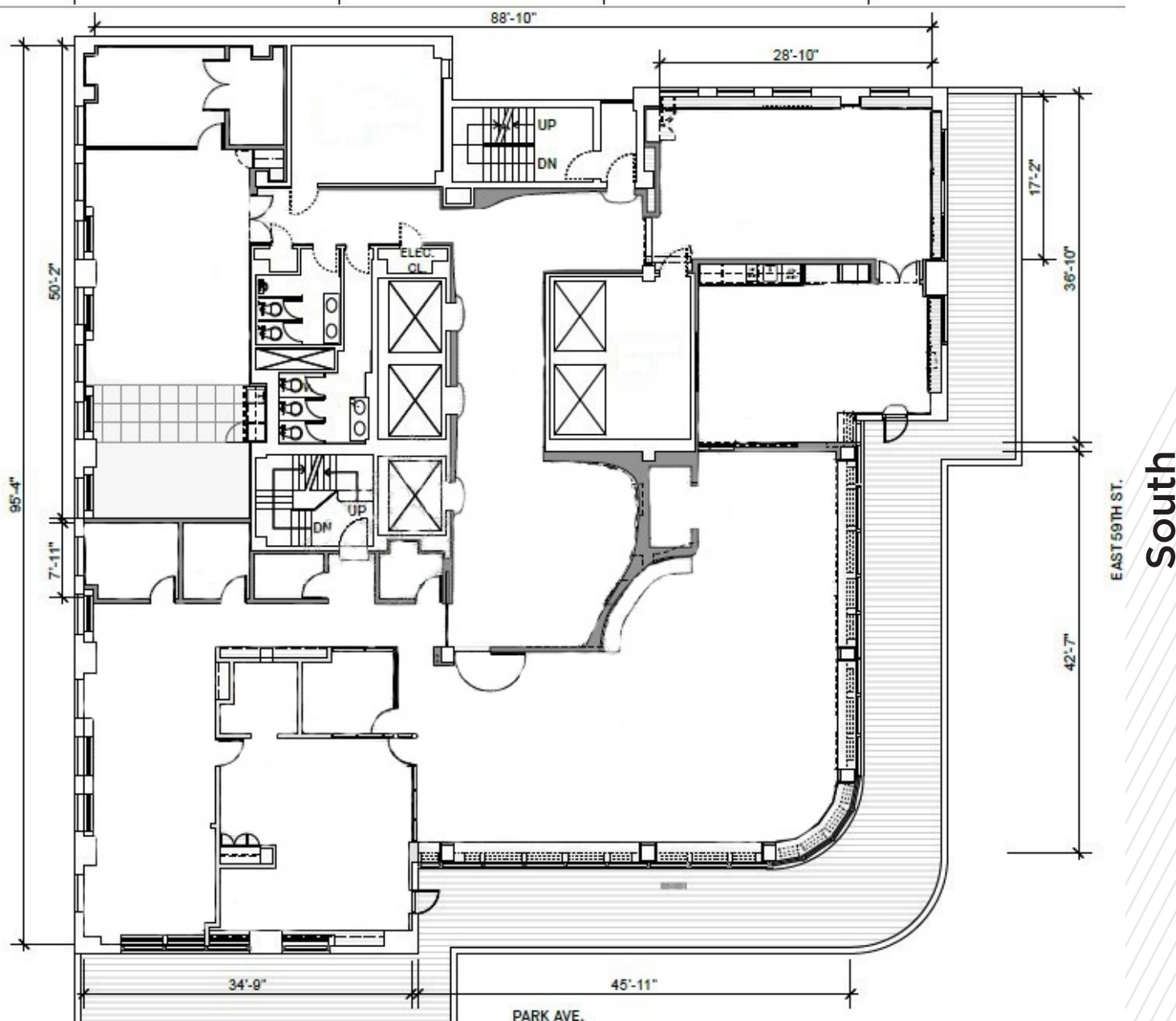
BUILDING FEATURES

- Recently built
- Wraparound terrace!
- Fully furnished
- Divisible to 7,000 SF
- Reliable Sublessor
- Ideal for family office, money management firms



FOR SUBLEASE
505 Park Avenue
Northeast Corner of 59th Street

Floor Plan
Entire 16th Floor: 9,404 RSF



West

FOR SUBLEASE
505 Park Avenue
Northeast Corner of 59th Street

