

# PRIME WEST-SIDE SHORT-TERM SUBLEASE



## Space Profile

Floor: **Partial 14th Floor**

Size: **9,513 SF**

Availability: **Immediate**

Rate: **Upon Request**

Term: **December 2023**

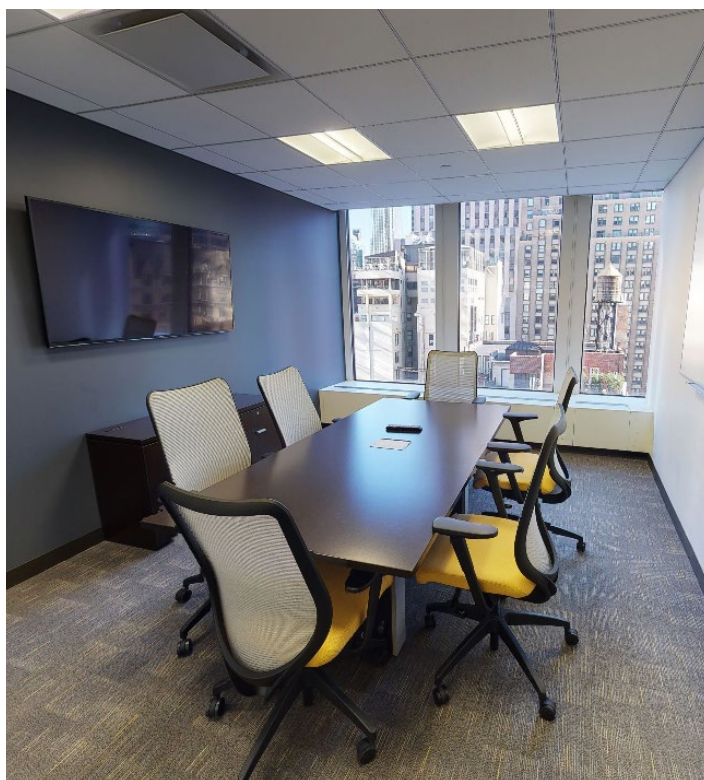
[Click for to view virtual tour](#)

## Key Highlights

- Newly-built, fully-furnished installation features exposed ceilings and glass-fronted offices/conference rooms
- 1700 Broadway has been recently renovated to include new lobby, elevators, building systems and a substantial tenant-only amenity center featuring outdoor space.
- Can be combined with the adjacent available unit to create a full floor
- Possibility exists for a long-term direct extension

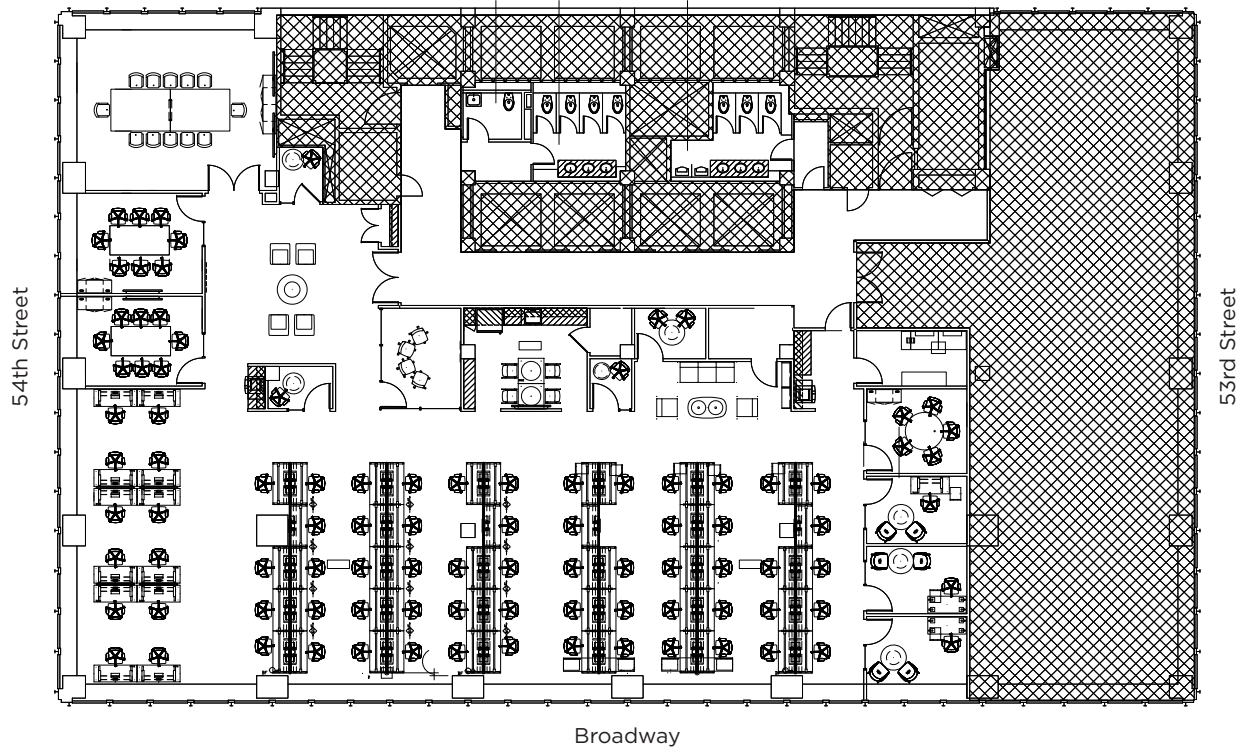


**SUBLEASE** 1700 Broadway, New York, NY 10019 | Columbus Circle



## Partial 14th Floor **9,513 SF**

[Click for to view virtual tour](#)



### Space Overview

- 1** Large Boardroom
- 2** 6-Person Conference Rooms
- 5** 4-Person Conference Rooms/Private Offices
- 4** 2-Person Conference Rooms
- 70** Workstations