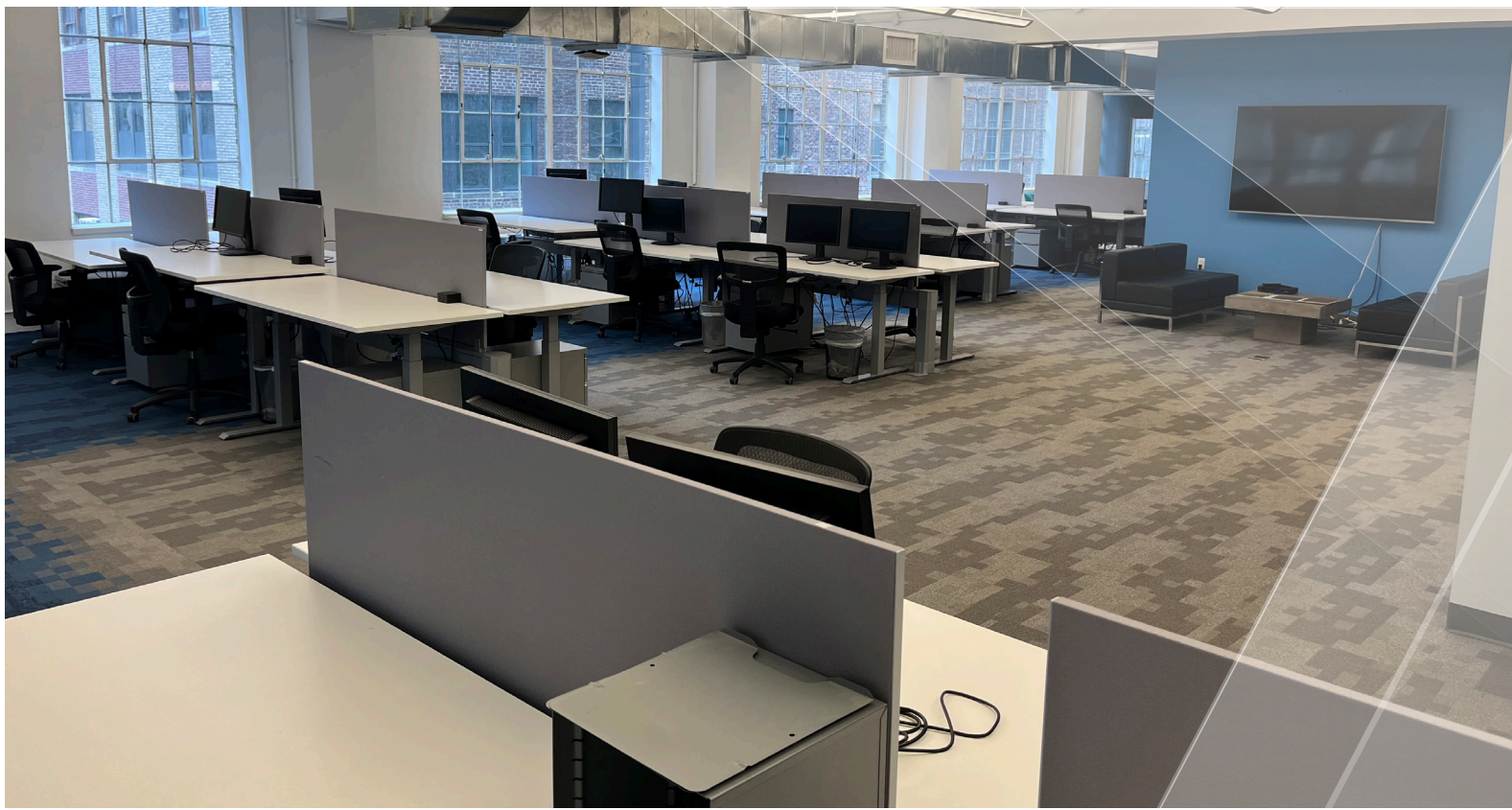


263 W 28TH STREET

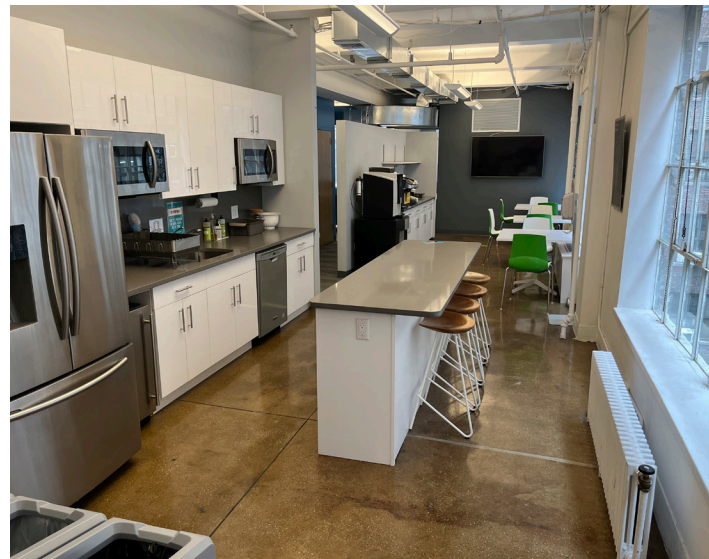
SUBLEASE ENTIRE 9TH FLOOR | 9,700 SF



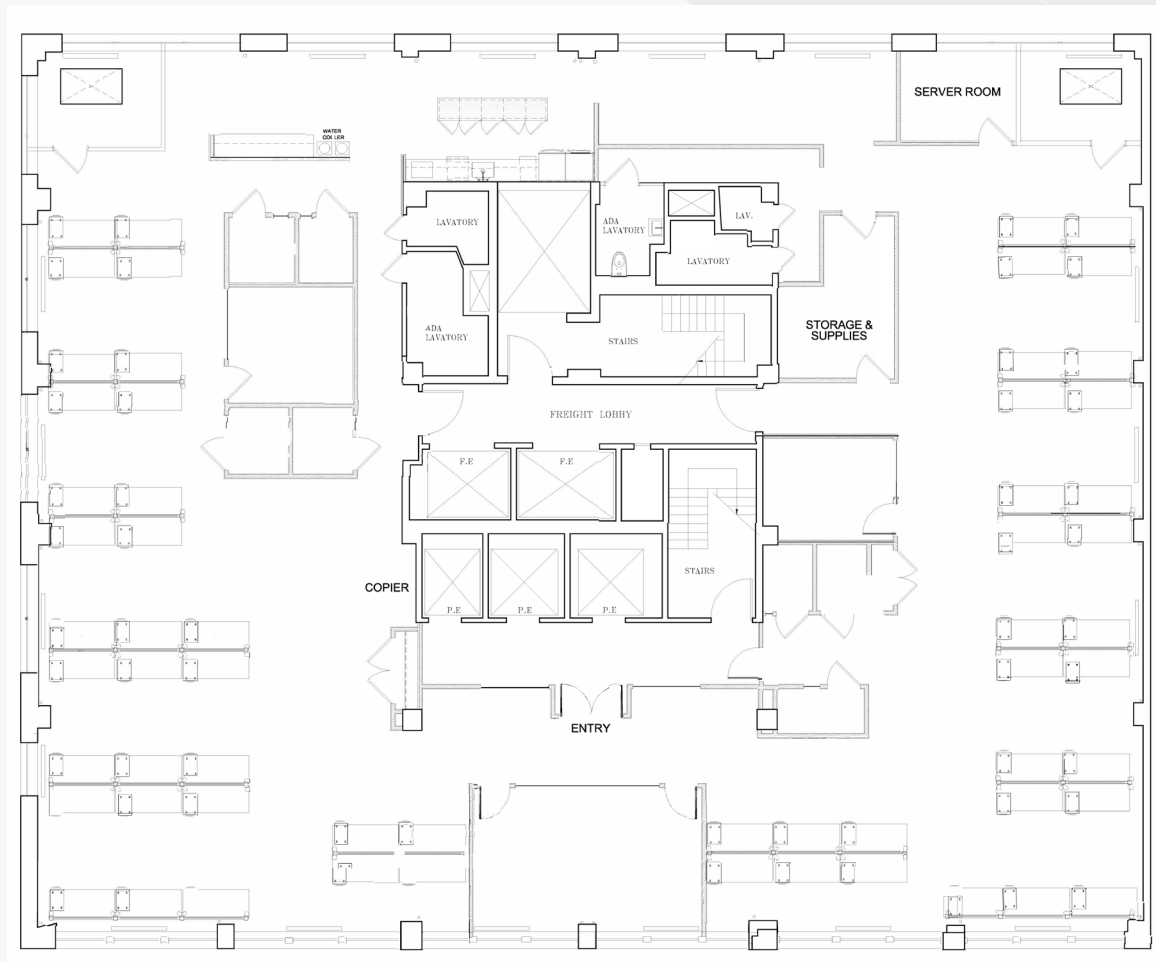


ABOUT THE SPACE

Full floor opportunity ideally located near Penn Station and Bryant Park. This space is saturated with natural sunlight from the many windows found throughout the space.



9TH FLOOR | 9,700 SF



- 65 sit-stand desks
- 2 six-person conference rooms
- 1 board room
- 7 phone booth rooms
- Eat in pantry with café seating
- IT Room
- Multiple storage closets
- Delivered fully furnished and wired