





**PARTIAL  
11TH FLOOR**

**SIZE**  
9,963 RSF

**ASKING RENT**  
Upon Request

**CAM CHARGES**  
3.50/RSF

**PARTIAL  
12TH FLOOR**

**SIZE**  
12,358 RSF

**ASKING RENT**  
Upon Request

**CAM CHARGES**  
Sub metered at 108%

**ENTIRE  
24TH FLOOR**

**SIZE**  
13,428 RSF

**ASKING RENT**  
Upon Request

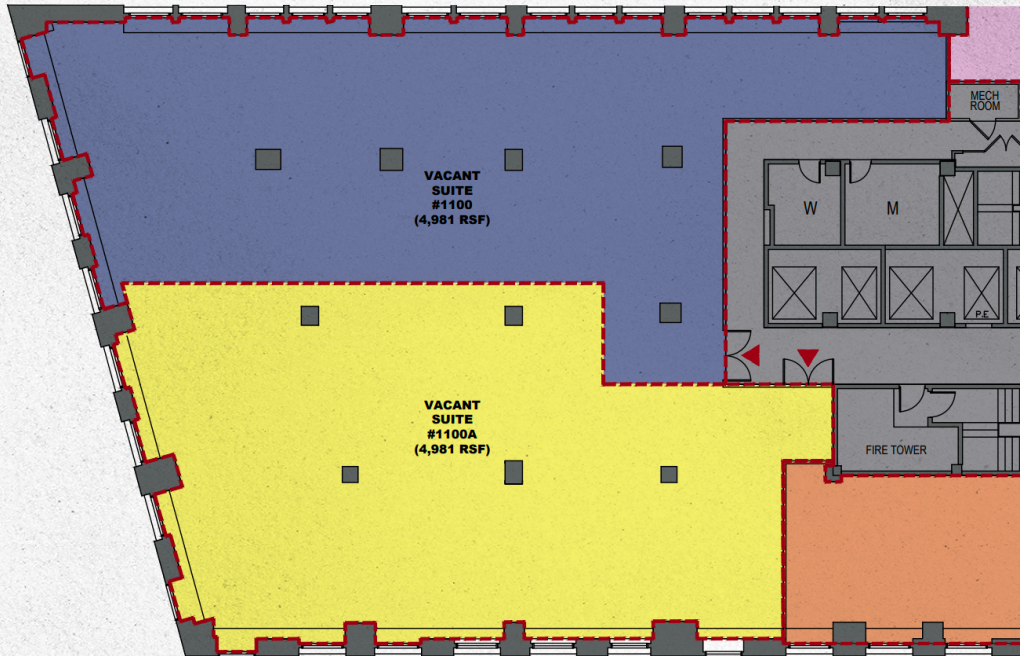
**CAM CHARGES**  
Sub metered at 108%



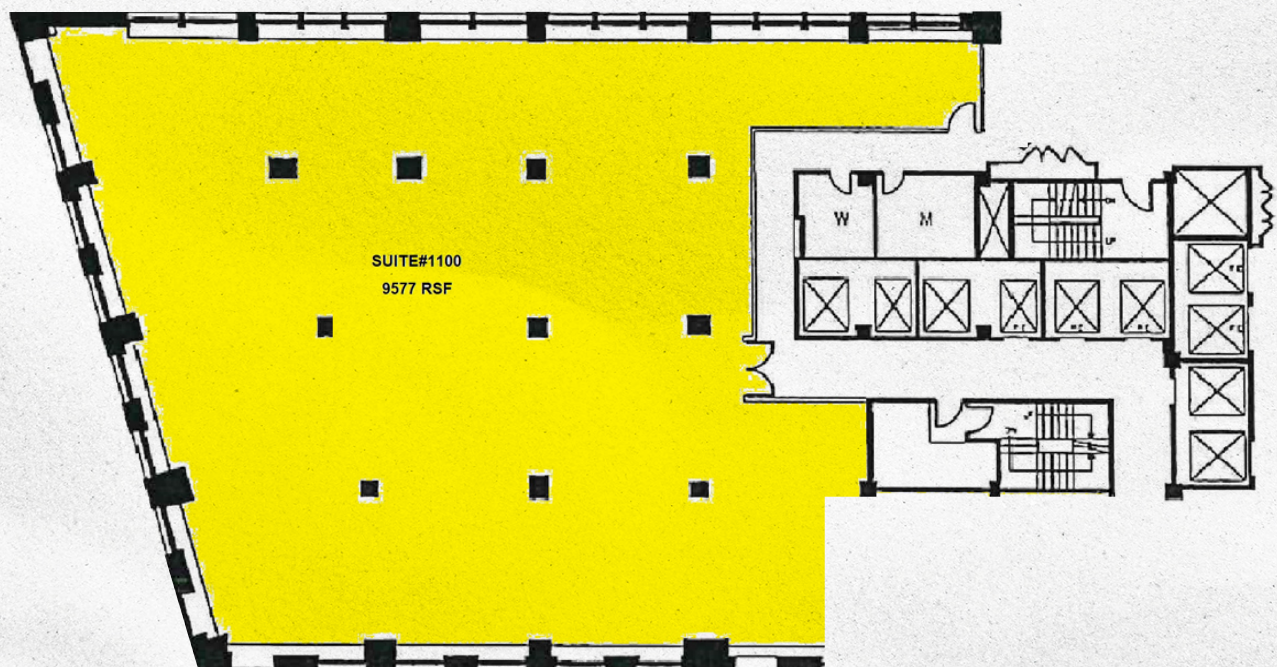
# PARTIAL 11TH FLOOR - SUITE 1100

Demolished space, landlord will build to suit per a mutually agreed-upon plan. Building features eight dedicated elevators, tenant-controlled AC, and 24/7 attended lobby. All reasonable divisions considered.

## EXAMPLE DIVISIONS



## ACTUAL DIVISIONS

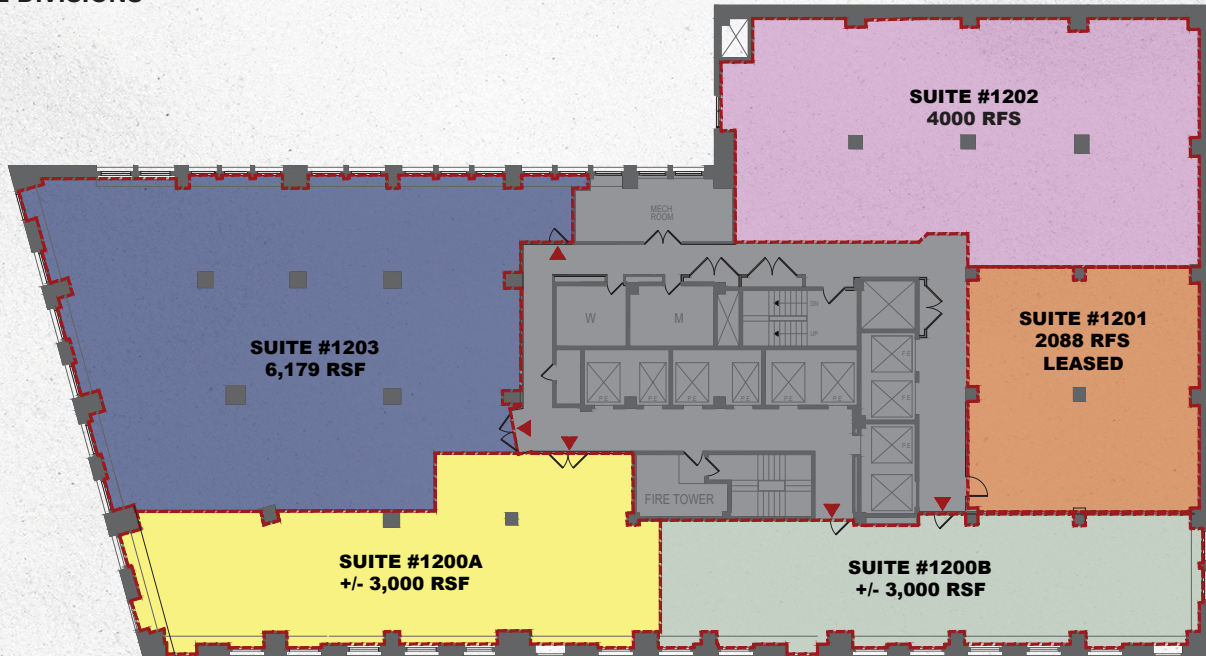




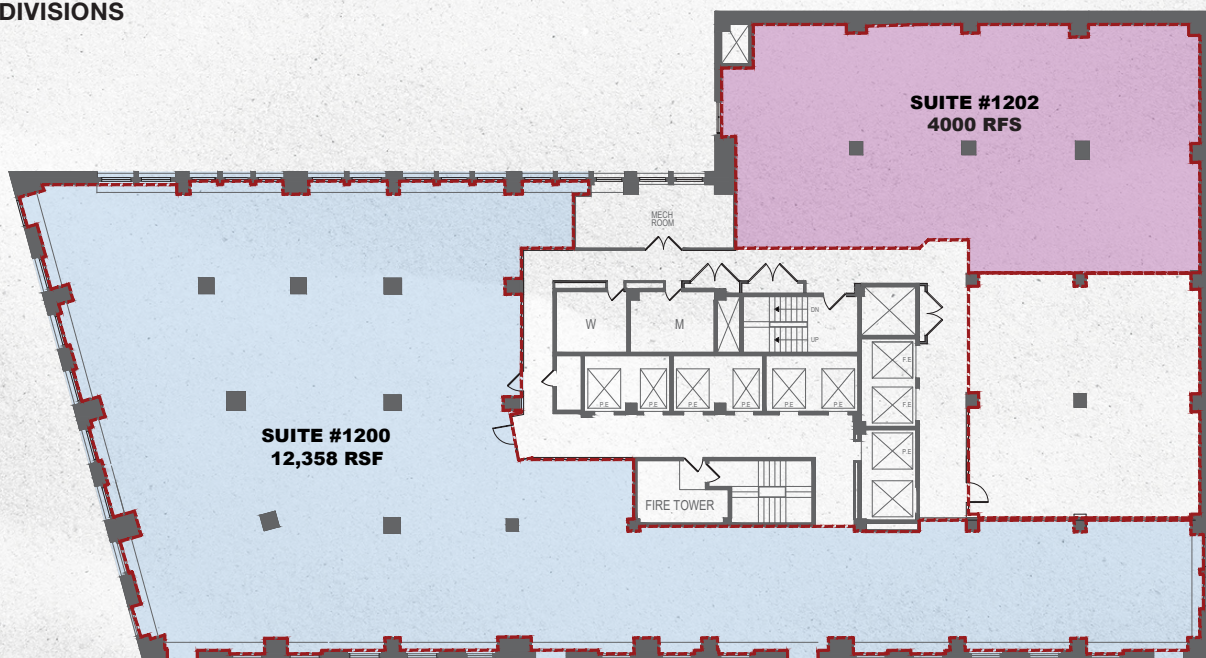
# PARTIAL 12TH FLOOR - SUITE 1200

The 12th floors is the crossover floor in the building which benefits from service from all elevators in the building and provides direct access to the rooftop bar lounge. Currently demolished space, landlord will build to suit per a mutually agreed-upon plan. Building features eight dedicated elevators, tenant-controlled AC, and 24/7 attended lobby. All reasonable divisions considered.

## EXAMPLE DIVISIONS



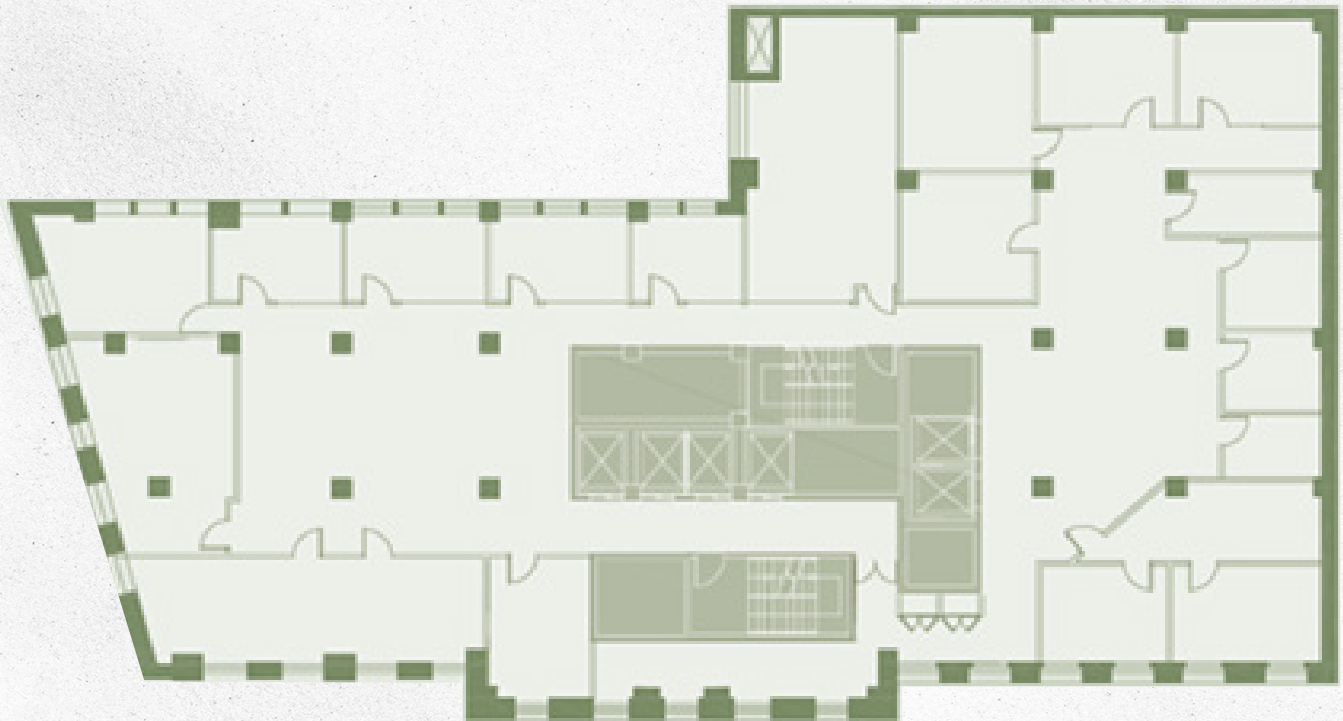
## ACTUAL DIVISIONS





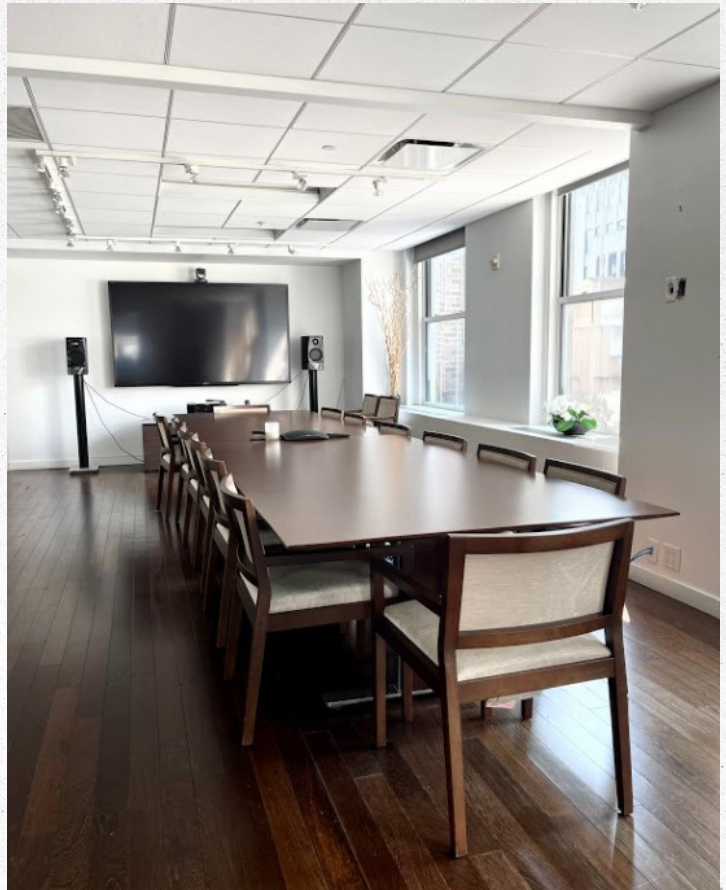
# ENTIRE 24TH FLOOR

Full Floor Penthouse Available: This space features a high end installation with a mix of large and small private offices, conference rooms, huddle rooms, large open areas, reception area, high-end pantry, above-building standard finishes, and direct access to the Elsie Rooftop.





# 24TH FLOOR





# ELSIE ROOFTOP

Twenty-five stories up near Bryant Park sits the lavish Elsie Rooftop paying homage to society's doyenne. Offering progressive mixology and an upscale seasonally focused light fare menu, which perfectly compliments every cocktail. Located on the 25th floor penthouse — Elsie is truly an all-season destination with stylish indoor and outdoor seating options.

