

2091 BROADWAY

BETWEEN 72ND & 73RD STREETS



UPPER WEST SIDE SUBLEASE PRIME OFFICE SPACE AVAILABLE

PREMISES

ENTIRE 2ND FLOOR: 2,571 RSF
ENTIRE 3RD FLOOR: 2,571 RSF
ENTIRE 4TH FLOOR: 939 RSF

ASKING RENT

UPON REQUEST

POSSESSION

MARCH 1, 2021

TERM

SUBLEASE THROUGH JULY 2024

COMMENTS

- REASONABLE DIVISIONS TO BE CONSIDERED
- FULLY FURNISHED
- TENANT-CONTROLLED HVAC
- ROOF ACCESS CAN BE MADE AVAILABLE
- LANDLORD WILL CONSIDER A DIRECT EXTENSION
- ACROSS THE STREET FROM VERDI PARK AND THE 1,2 & 3 SUBWAY LINES

2091 BROADWAY

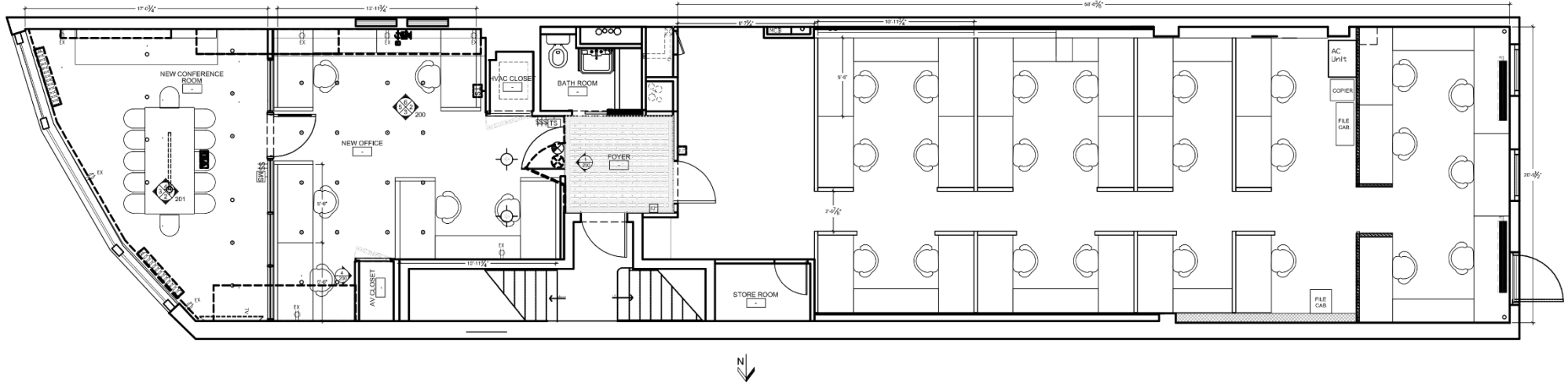
BETWEEN 72ND & 73RD STREETS



2091 BROADWAY

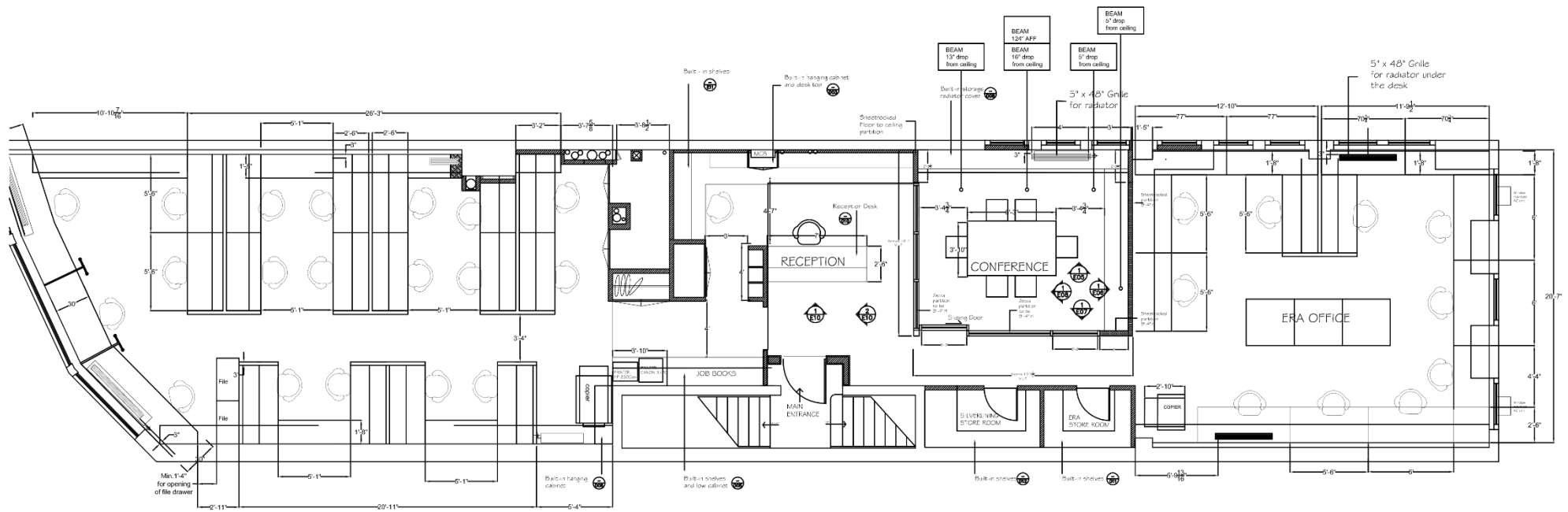
BETWEEN 72ND & 73RD STREETS

2,571 RSF
ENTIRE 2ND FLOOR



BETWEEN 72ND & 73RD STREETS

2,571 RSF
ENTIRE 3RD FLOOR



2091 BROADWAY

BETWEEN 72ND & 73RD STREETS

939 RSF

ENTIRE 4TH FLOOR

