



250  
E49

## MIDTOWN EAST / UNITED NATIONS OFFICE FOR LEASE

250 EAST 49TH STREET, NEW YORK, NY | SOUTHWEST CORNER OF SECOND AVENUE



### ASSET OVERVIEW

Location	Southwest corner of East 49th Street and Second Avenue
Second Floor	5,070 SF
Possession	Immediate
Asking Rent	Upon Request
Term	2+ Years



# SPACE FEATURES



Located at the base of The Alexander Condominium (built 2008)



Convenient access to the 4, 5, 6, 7, S, E and M subway lines, and Grand Central Terminal



Large signage opportunities



Soaring 15'4" ceiling heights with a continuous band of floor-to-ceiling windows



Prime Midtown East location with close proximity to the United Nations Headquarters



Separate street level entrance and elevator, located on Second Avenue



Fully furnished and wired pre-built unit



Large Outdoor Terrace



Boardroom with 16 seats



Multiple breakout areas



Tenant Controlled HVAC

# FLOOR PLAN



EAST 49TH STREET

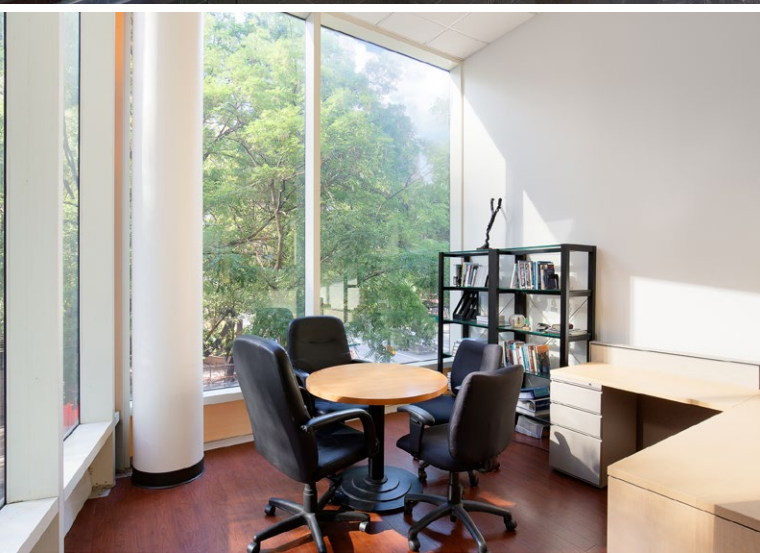


SECOND AVENUE



# PROPERTY PHOTOS

250  
E49





# TRANSPORTATION MAP

