

# 110 East 40<sup>th</sup> Street

Between Park and Lexington Avenues



## SPACE DETAILS

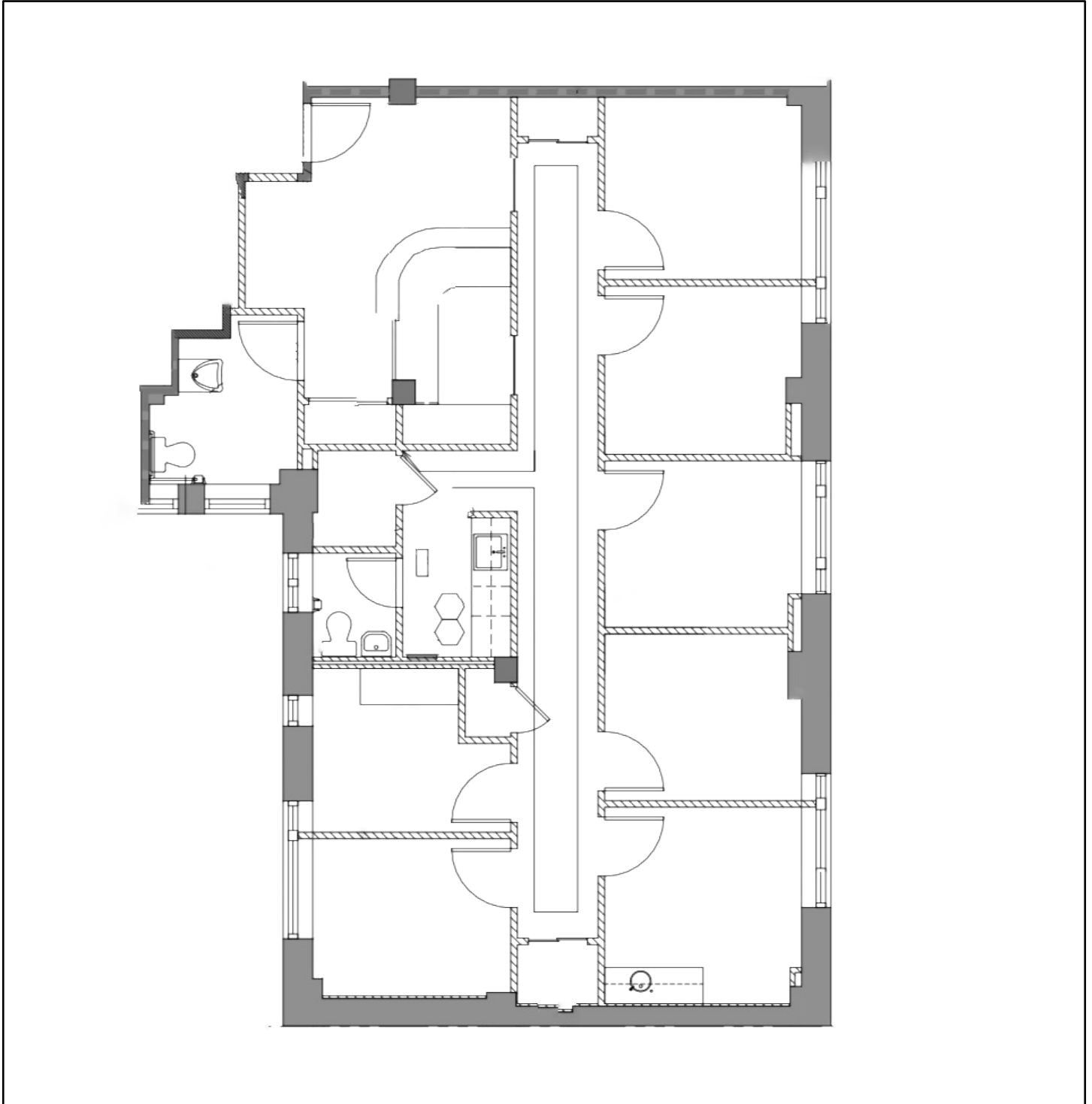
- **Space:** Suite 407
- **Total Area:** 2,587 RSF
- **Possession:** Arranged
- **Term:** Negotiable
- **Rent:** Upon Request

## HIGHLIGHTS

- Move-in Ready High-End Medical Installation
- 5 Windowed Exam Rooms, Including 1 Room w/Sink
- Reception area
- 2 Restrooms
- Wet Pantry
- 2 Offices/Consult Rooms, One with Windows
- Available For Sale- Details Upon Request
- Recently renovated attended Lobby with Elevators
- All Office Uses Will Be Considered

# 110 East 40<sup>th</sup> Street

Between Park and Lexington Avenues



# 110 East 40<sup>th</sup> Street

Between Park and Lexington Avenues

